

Housing Authority of the City of Sacramento

CHOICE NEIGHBORHOODS INITIATIVE
Upper Land Park – Broadway

Resident Meeting #1
March 24, 2014, 6:00 PM
Health Professions High School
451 McClatchy Way

1. **Welcome and Introduction of Team** – Celia Yniguez, SHRA (5 minutes)
2. **What is the Choice Neighborhoods Program?** – Celia Yniguez, SHRA (5 minutes)
 - ◆ Overview of the Planning Grant Objectives
 - ◆ Upper Land Park – Broadway Study Area
 - ◆ End Goal: Transformation Plan
3. **What is Choice Neighborhoods Initiative (CNI) Planning Process?** Team (15 minutes)
 - ◆ Task Forces - Team
 - People: Health, Education, & Workforce Development, Erik Kregel, Mercy Housing California
 - Housing, Lydia Tan, Related Companies of California
 - Neighborhood, Scot Mende, City of Sacramento
 - ◆ Citizens Advisory Committee, Celia Yniguez
4. **Questions and Answers** – (10 minutes)
5. **How Can Your Participate?** – Celia Yniguez, SHRA (10 minutes)
 - ◆ Resident Needs Assessment
 - ◆ Neighborhood Survey
 - ◆ Resident Meetings
 - ◆ Website/Newsletter
6. **Group Activity** – All (30 minutes)
7. **Next Steps** – Celia Yniguez, SHRA (5 minutes)

Handouts:

- ◆ Upper Land Park Broadway Choice Neighborhoods Planning Initiative
- ◆ Development Team

Choice Neighborhoods Initiative

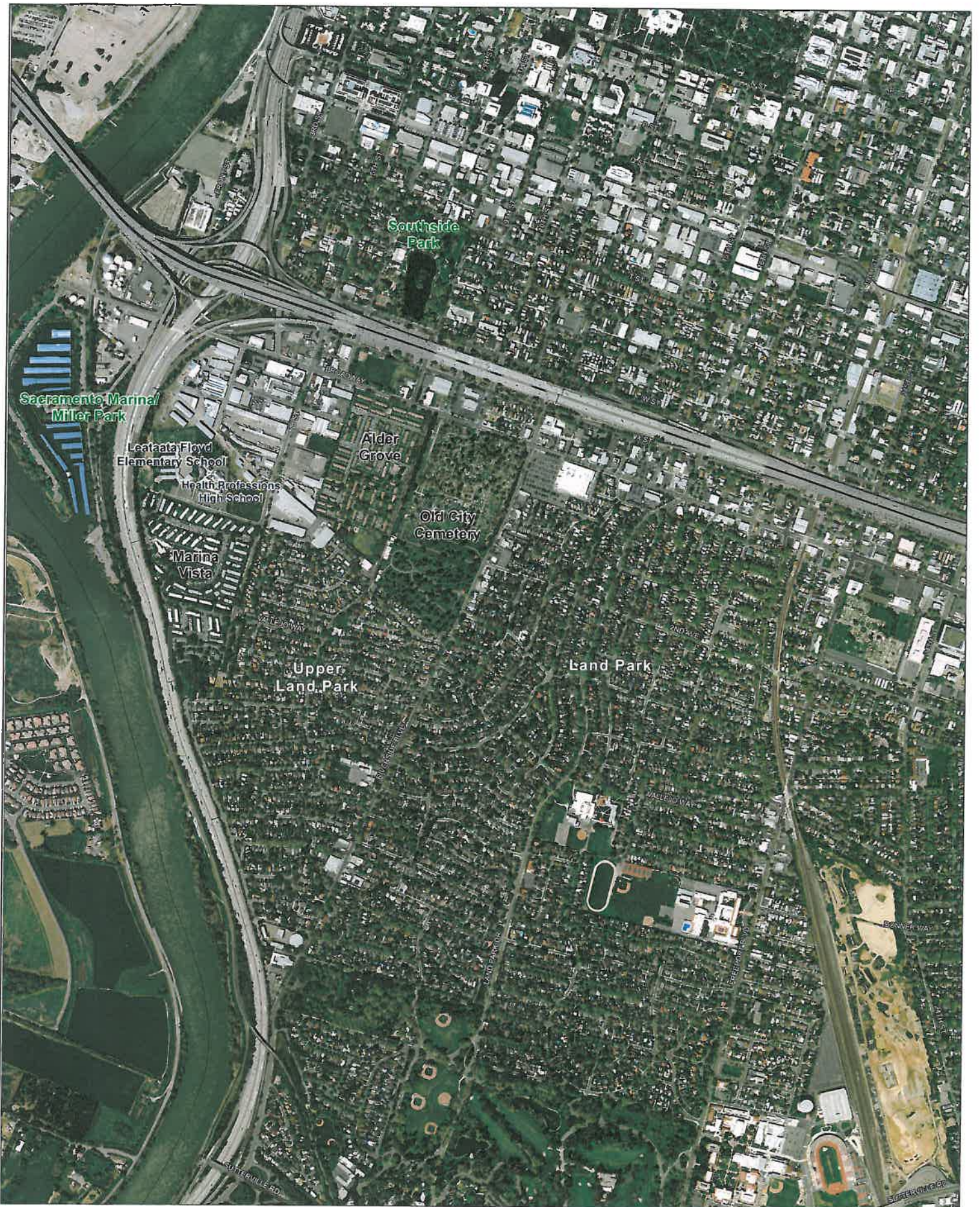
Choice Neighborhoods is an initiative by Department of Housing and Urban Development (HUD) to develop a comprehensive approach to neighborhood transformation and revitalization. Beyond just addressing severely distressed public housing which is the target of the very successful HOPE VI Program, the Choice Neighborhoods Initiative seeks to address the distressed neighborhoods around these developments by also targeting other assisted and vacant housing in the community and investing in people and neighborhood assets.

Toward this end, HUD has identified three goals for the program and where to direct resources:

- **Housing** – transform severely distress public and/or assisted housing into energy-efficient, mixed- income housing that is financially and physically viable over the long term. Implementation typically requires an experienced housing developer.
- **People** – support positive outcomes for both the public/assisted housing residents and the surrounding neighborhood with a focus on health, safety, employment, mobility and education. HUD encourages the grant recipients to work with the educational institutions and providers in the community to develop a comprehensive cradle to college educational delivery system including early childhood learning, schools, and other educational programs.
- **Neighborhood** – transform poverty neighborhoods into viable, mixed-income ones with access to well-functioning services, high quality public schools and education programs, high quality early learning programs and services, public assets, public transportation and improved access to jobs. A key goal is to coordinate the investment by public and private institutions in the community to leverage each other’s investments and contribute to the revitalization of the area.

The goal is to transform communities as well as the lives of residents.

Recipients of Choice Neighborhoods Planning Grants have a two-year planning period to develop a thoughtful and thorough comprehensive “transformation” plan for the targeted neighborhood and housing development. Planning Grant recipients will then have the opportunity to apply for an Implementation Grant to make the “transformation” plan a reality.



CHOICE NEIGHBORHOODS INITIATIVE
Upper Land Park – Broadway

Resident Meeting #1
 March 24, 2014, 6:00 PM
 Health Professions High School
 451 McClatchy Way

Group Exercise Summary Results

	What I like about my Neighborhood	What I Dislike about my Neighborhood
Table 1	Good service providers	Less frequent bus service
	Good SHRA Management	Less Police interaction with kids – no Problem Oriented Policing (POP)
	SHRA job training	Physical barrier between Marina Vista & Alder Grove
Table 2	Proximity to downtown and museums	Transit service gaps in Lower Broadway area
	Diversity of People	No full service grocery store
	Proximity to schools, parks, community gardens	5 th Street commercial corridor
Table 3	Trees in Alder Grove	Lighting
	Park setting in Alder Grove (green)	Bus line run more frequently
	Farmers Market (Sunday)	Kids activities towards education/broaden their horizons to get out of the neighborhood
		Educational Programs for Adults
Table 4	Training Program	No POP officers
	Public Transportation	Drug activity
	Freeway Access	Speeding
	Churches	